



# PEA-RP200GA

Power Inverter Heat Pump

R410A Large Capacity Ceiling Concealed Ducted System

Advanced inverter technology makes the Mr Slim Power Inverter the number one choice for improving comfort. They provide energy savings of up to 70% annually when compared to a previous non-inverter model. Operating noise has also been reduced thanks to improvements in fan design, while existing pipe work is reusable for easier maintenance and installation.

- **Static pressure of up to 150Pa**



Pictures not to scale

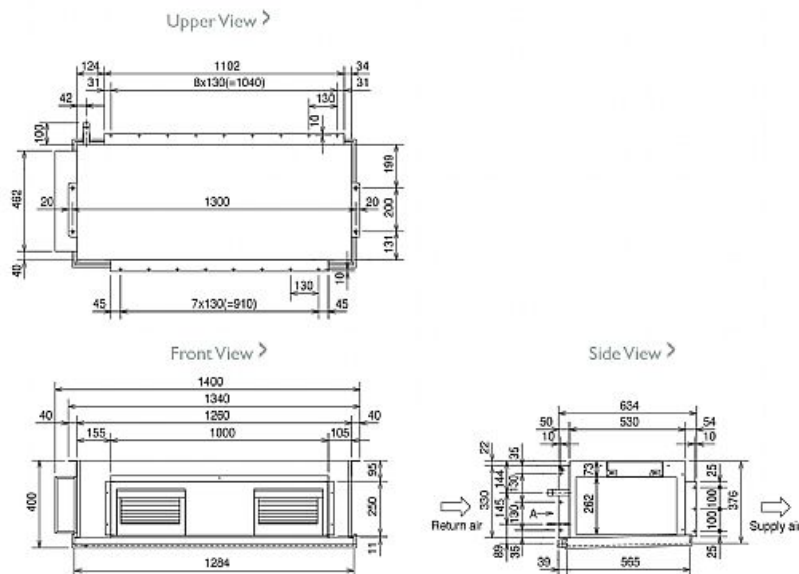
## Product Details

PEA-RP200GA Indoor Unit	
Capacity (kW):	
Heating (Nominal) (Low - High)	22.4 (9.5 - 25.0)
Cooling (Nominal) (Low - High)	19.0 (9.0 - 22.4)
Heating (UK) (Low - High)	19.05 (8.1 - 21.25)
Cooling (UK) (Low - High)	17.1 (8.3 - 21.15)
SHF R410A (Nominal)	0.81
Width - mm	1400
Depth - mm	634
Height - mm	400
Weight - kg	70
Airflow (m <sup>3</sup> /min) - Lo-Hi	52-65
External Static Pressure Pa	150
Noise (dBA) - Lo-Hi	48-51
Pipe Size Gas mm (in)	28.58 (1 1/8)
Pipe Size Liquid mm (in)	9.52 (3/8)
Electrical Supply	380-415v, 50Hz
Phase	3
Fuse Rating (BS88) - HRC (A)	6
Power Input (kW) - Heating (Nominal)	1
Power Input (kW) - Cooling (Nominal)	1
Power Input (kW) - Heating (UK)	0.89
Power Input (kW) - Cooling (UK)	0.89
Starting Current (A)	5.6
Running Current (A) - Heating / Cooling	2 / 2
Interconnecting Cable No. Cores	3
Remote Controller Ref	PAR-21MAA

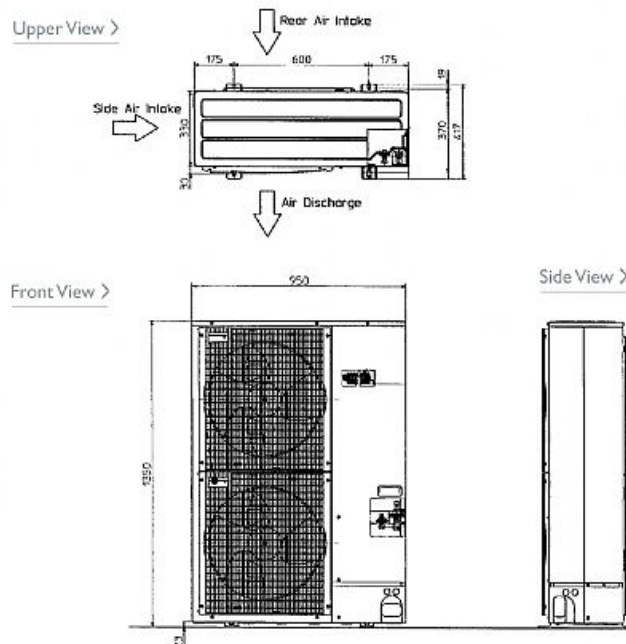
PUHZ-RP200YHA2 Outdoor Unit	
Width - mm	950
Depth - mm	330 + 30
Height - mm	1350
Weight - kg	135
Noise (dBA) (Heating /Cooling) - Lo-Hi	59-59 /58-58
Electrical Supply	380-415v, 50Hz
Phase	3
Fuse Rating (BS88) - HRC (A)	32
Power Input (kW) - Heating (Nominal)	5.5
Power Input (kW) - Cooling (Nominal)	5.7
Power Input (kW) - Heating (UK)	4.9
Power Input (kW) - Cooling (UK)	4.85
Starting Current (A)	5
Running Current (A) - Heating / Cooling	8.9 / 7.7
Mains Cable No. Cores	5
Max Pipe Length (m)	120
Max Height Difference (m)	30
Charge R410A (kg) - 30m	6.5

## Dimensions

PEA-RP200GA



PUHZ-RP200YHA2



Telephone: 01707 282880

Email: [air.conditioning@meuk.mee.com](mailto:air.conditioning@meuk.mee.com) Website: <http://www.mitsubishielectric.co.uk/aircon>

Mitsubishi Electric reserves the right to make any variation in technical specification to the equipment described, or to withdraw or replace products without prior notification or public announcement.

Tel:  
Fax:

